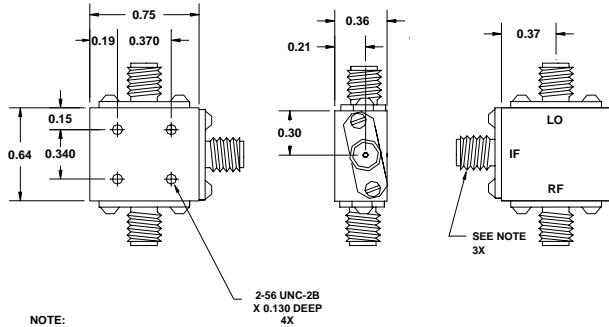


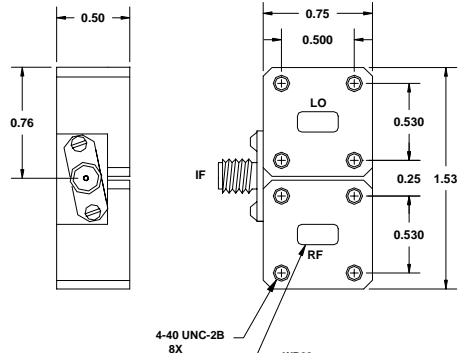
## MX SERIES



NOTE:  
SMA FEMALE UP TO 26.5 GHz  
K-F FOR Ka BAND

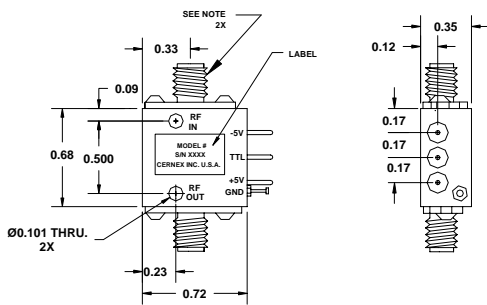
## MX SERIES

### with WAVEGUIDE CONNECTORS



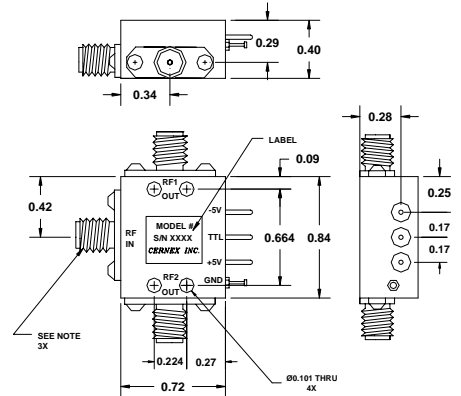
NOTE:  
SMA FEMALE UP TO 26.5 GHz  
K-F FOR Ka BAND

## SW1



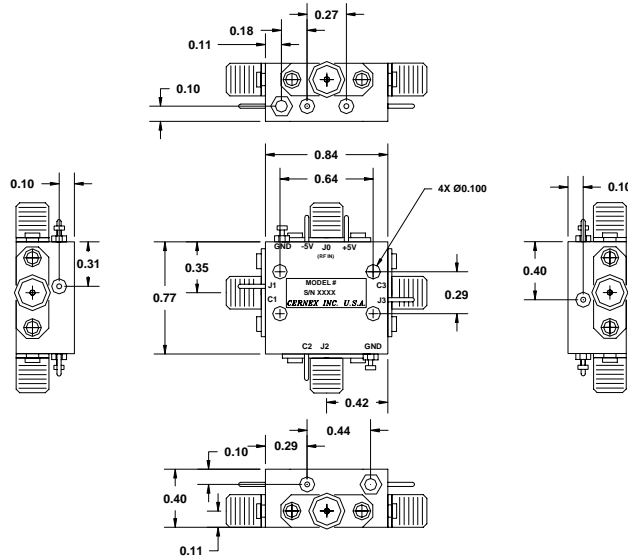
NOTE:  
SMA FEMALE UP TO 26.5 GHz  
K-F FOR Ka BAND

## SW2 (A&B)



NOTE:  
SMA FEMALE UP TO 26.5 GHz  
K-F FOR Ka BAND

## SW3



NOTE:  
SMA FEMALE UP TO 26.5 GHz  
K-F FOR Ka BAND