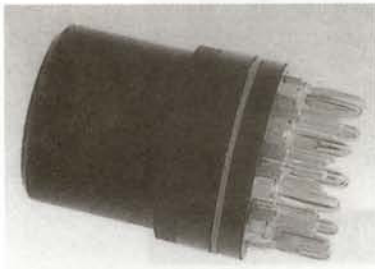


Series WY28 High Temperature Resistant Circular Connectors

This series of connectors are suitable for connecting circuits in test instruments of oil well.

PRODUCT EXAMPLES

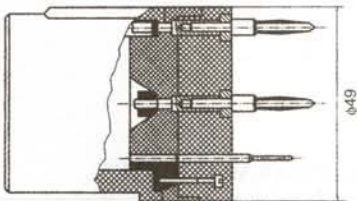


WY28T

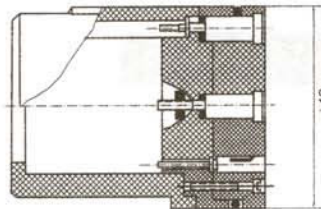


WY28Z

WY28T



WY28Z



TECHNICAL CHARACTERISTIC

Working voltage	300V
Working current	0.3A
Contact resistance	$\leq 0.005\Omega$
Insulation resistance	
Normal	$\geq 1500M\Omega$
174°C After 4 hours	$\geq 800M\Omega$
After moisture test	$\geq 10M\Omega$
Normal Disengage force	0.1 ~ 0.3kgf
200°C After 6 hours	$\geq 0.08kgf$
Test voltage	
Normal	1200V
After moisture test	800V
Durability	500 cycles

Environmental Condition

Temp range	-55 ~ + 175°C
RH	90% ~ 95%, +40°C
Vibration	15m/S ² , 10 ~ 2000Hz
Shock	50m/S ²