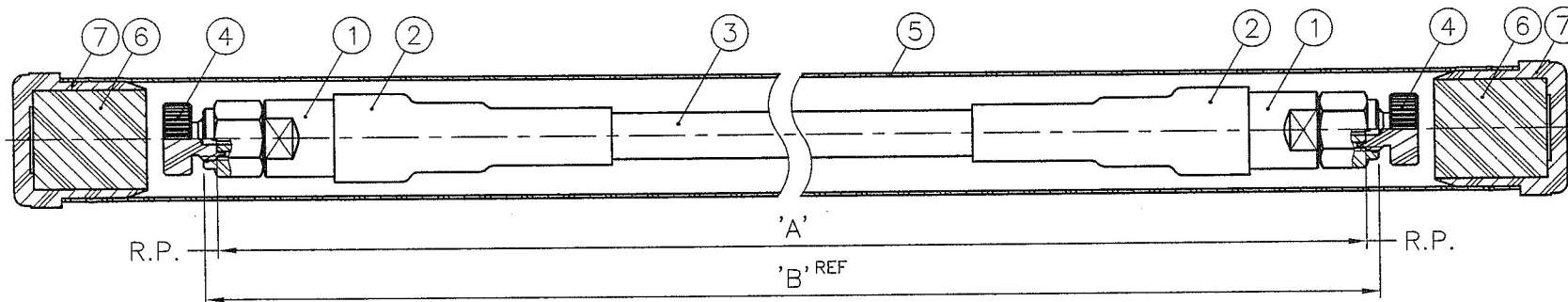


REVISIONS


ISS	SYMBOL	DESCRIPTION\DATE



XX	A(mm)	B(mm)
04	100	102.4
08	200	202.4
12	300	302.4
16	400	402.4

NOTE 1: TRANSPARENT (透明)

HSF COMPLIANT

NO.	DESCRIPTION	MATERIAL	FINISH	Q'TY	DETAIL	SCALE	1.5/1	ISSUE	A3			
7	COVER	PE	NOTE 1	2		DIMENSIONS ARE IN MILLIMETERS UNLESS OTHERWISE SPECIFIED TOLERANCES <50 = ±1 >50~500 = ±2 >500~1000 = ±3.5 >1000~2000 = ±5 >2000~3000 = ±10 >3000 = ±20	PART NO.					
6	FOAM			2						APPROVED	DATE	TITLE
5	TUBE	PET	NOTE 1	1							11/06/15'	CABLE ASSEMBLY
4	COVER	POM	BLACK	2						CHECKED	DATE	(1.0mm PLUG TO 1.0mm PLUG)
3	CABLE		BLUE	1							11/06/15'	DRAWING NO.
2	HEAT SHRINK TUBE		BLUE	2	GLUE INSIDE					DRAWN	DATE	C10M-10M87HS-XX
1	CONNECTOR			2	1.0mm PLUG		11/06/15'	FILE NO. Z:\CAA\87HS\10P-10P\FLCA10P10P87HS-XXS-A3				